

**Our Recommendation:
Town of Pelham should build a new
high school on new piece of land.**

The High School Facilities Committee concluded that it is better to build a new school on a new site than to continue using the existing building as a high school.

BUILDING THE NEW SCHOOL

Building a new high school on a new site avoids challenges with regards to septic design, parking location and capacity, and sports field location. This strategy also enables Pelham to address other School District needs by re-using the existing structure in the future.

The school board is currently reviewing land opportunities in Pelham. Residents are encouraged to inform the Superintendent of any available land that would meet the High School's needs.

38.8 MILLION TO BUILD ON NEW SITE

That's the estimated cost, based on discussions and estimates by Marinace and reviewed by LaVallee Architects. That estimate includes \$2M for land purchase

OFFSETS TO THE COST OF A NEW SCHOOL

The State of NH reimburses the town with monies applied to bond.

- 11.6M Estimated State aid (Currently 30%)
- Potential 1.2M estimated Green Reimbursement from State (3% maximum)

The Pelham Elementary School Bond will be paid off in 2010

WHAT DOES A NEW HIGH SCHOOL DO FOR PELHAM?

It is common for communities that build a new high school to experience a 10-15% improvement in property values.

A new high school makes the town more attractive to potential homebuyers and homebuilders. More homes broaden the tax base, and bring more customers to town for local businesses.

An improved facility would enable PHS to offer students a better curriculum, resulting in more opportunities for graduates.

A new high school would remove the stigma of PHS having a "Warning" accreditation status.

CURRENT STATE OF PHS

SOME POSITIVE THINGS ABOUT PHS:

PHS students have an 80% college acceptance rate.

PHS students do more community service than any other school in the state.

PHS has a dropout rate of only 2.0%.

PHS offers a strong *Running Start* program for certain classes where students are dual enrolled at both a local college and PHS, and receive college credits for work done while still in high school.

PHS offers 3 career-specific *Pathways* programs that prepare students for further study in Law, Education and Finance. A fourth Pathway, Biotechnology, cannot be offered because of space limitations.

SOME CONCERNS ABOUT PHS

PHS would like to offer its students an even better curriculum consisting of 59 class titles. Currently the

school offers 47 classes. Space and teacher resources are the primary constraints.

16 of 18 *general* classrooms are undersized.

Undersized *specialty* areas include music, art, computer lab, darkroom, and special education.

PHS wishes to offer a Biotechnology Pathway as part of its curriculum, but lack of lab space prevents this.

7/6/09 Statements by Ed Murdough, NH Bureau of School Approval Facility Management:

"Rooms 20 and 22 meet the standard of 1200 square feet in effect at the time the school was built. Room 6, at 985 square feet, is acceptable for biology where there is minimal use of hazardous chemicals."

"We will change our records to indicate that the school meets minimum state requirements for science instructional spaces. I should emphasize the word 'minimum.'"

PHS ACADEMIC ACCREDITATION STATUS:

YOU SHOULD KNOW: Even with these concerns, the NEASC commended Pelham High School, citing "The remarkable job the school does in offering a comprehensive program for students despite the building and staffing constraints."

PHS is currently on a **Warning status** from New England Association of Schools and Colleges, (NEASC), November 2008. Reasons cited:

"Inadequate classroom space"

"Only one set of student restrooms for an enrollment of students close to 700 students."

"Security and safety of building occupants caused by the open access to the facility from the portable classrooms."

"Limited space available to teachers for planning and collaboration"

"Ongoing instructional distractions caused by classroom walls and partitions that do not extend from floor to ceiling."

"Lack of adequate storage throughout the facility."

"Inadequate space in the food services and cafeteria areas to provide a full school breakfast and lunch program for a sufficient number of students. "

"Undersized cafeteria, which requires the school to schedule four lunch periods."

Many colleges require graduation from an Accredited High School.

ADDITIONAL PELHAM SCHOOL DISTRICT NEEDS TO BE ADDRESSED

Permanent Kindergarten Solution

Permanent Special Ed Preschool Solution

Relief for overcrowding at Pelham Memorial School

It is estimated up to \$9 Million to renovate existing high school into a 500-student school to address district-wide overcrowding issues. Estimate includes:

- Reconfiguration of classrooms
- Upgrade to mechanical systems
- Address remaining life safety code issues

WHAT YOU CAN DO

**Get the Right Information Now!
Vote In March!**

HOW TO GET MORE INFORMATION:

Attend Public Meetings:

- High School Facilities Committee Meetings
- Pelham School Board Meetings
- Pelham School Board Open Forums

Schedule High School Facilities meetings for your community groups or neighborhood! Ask us for help!

Review information on Pelham School District Website at: www.pelhamsd.org. Key reports and documents include:

- Pelham School District Facility Analysis, Team Design 2002
- Facility Planning Options, Pelham School District, Frank Marinace, 4/18/07
- Pelham School District Facility Planning Option Follow up Questions 5/2/07
- Report of Visiting Committee Pelham High School Pelham NH, 4/6/08
- Pelham High School Proposed Curriculum Offerings, Teach 2004, updated 9/15/08
- Accreditation Report New England Association of Schools and Colleges, Letter, 11/04/2008
- Topographic Survey PHS, Marinace 5/2009
- Pelham High School Facilities Committee Presentation to Pelham School Board 5/27/09

CURRENT SCHOOL CAPACITIES

PELHAM HIGH SCHOOL (GRADES 9-12)

- 561 Capacity at 85% utilization (State recommendation)(660 at 100%)
- 647 Students enrolled as of (June 2009)
- Utilization allows for flexibility in curriculum, easier traffic flow and allows the school to absorb "bubble" classes.

PELHAM MEMORIAL SCHOOL (GRADES 6-8)

- Classroom Capacity 510
- Core capacity ranges 350-400
- 544 students (June 2009)

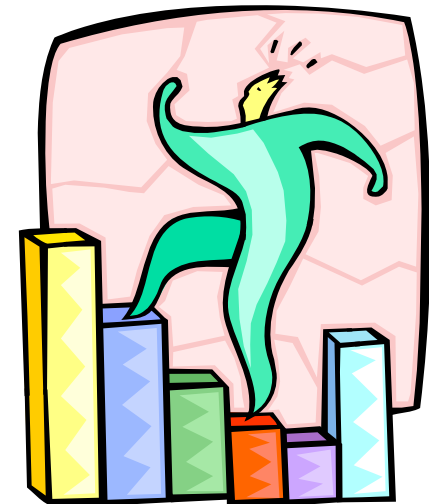
PELHAM ELEMENTARY SCHOOL (GRADES 1-5)

- School Capacity: 1000
- 936 students (June 2009)

KINDERGARTEN

- District must be able to provide for all eligible students.
- Portables for 3 years, permanent solution needed.
- Permanent Preschool Special Education Services

Step Up for Education Support our New High School!



Contact High School Facilities Committee at
PHSfacilities@pelhamsd.org

Contact Pelham School Board at

psb@pelhamsd.org